



MEDEA



Inspire your imagination

iwata

ANEST IWATA WARRANTY

Airbrushes

An unprecedented five-year warranty backs all Iwata airbrushes and spray guns. All Iwata airbrushes are warranted against all manufacturing defects of material and manufacture or workmanship for a period of FIVE years from date of purchase. Any part or material that is or becomes defective so as not to be usable within this period will be repaired or replaced. This warranty does not cover damage caused by negligence or units that have been altered or abused in any way.

**Needles and Nozzles need to be replaced from time to time due to ordinary wear and are not covered by the above warranty.*

Compressors

All Iwata air compressors are warranted against all manufacturing defects of material and manufacture or workmanship for a period of ONE year from date of purchase. Any part or material that is or becomes defective so as not to be usable within this period will be repaired or replaced. This warranty does not cover damage caused by negligence or units that have been altered or abused in any way.

Repairs & Cleaning Policy

Anest Iwata Europe s.r.l. offers repair and cleaning services for all Iwata airbrushes. The following options are available to assist customers in getting the highest quality service available.

1. E-mail Technical Support: offers technical support over the e-mail. This service includes general usage information, cleaning tips, and troubleshooting. Please mail to: tech.service@airbrush-iwata.com
2. Cleaning & Repair Service: For a fee of Euro 20,00 Anest Iwata Europe professional technician will repair, clean, lube and test your Iwata airbrush. There is an additional charge for any needed replacement parts.

NOTE: All airbrushes returned for repair must have a Return Authorization Number. Please send an email to tech.service@airbrush-iwata.com to obtain an RA number, instructions, and our shipping address.

**Needles and Nozzles need to be replaced from time to time due to ordinary wear and are not covered by the above warranty.*

Tradition, Innovation and Excellence

Our airbrush range is worthy of your attention:
it has been chosen by some of the top and renowned artists in the world.

Artists trust IWATA because they know they can find in our products
the quality they are expecting.

In order to help them express their ideas and emotions,
we produce and distribute the most innovative high quality airbrushes,
designed and tested by artists for artists.

While all Iwata products are designed and manufactured
to the highest standards without compromise,
each series has a distinct advantage for different types of applications.



iwata



Custom Micron

Absolute Precision for the Elite Professional

Hi-Line

Hi-Control of Hi-Precision Work

iwata

iwata

High Performance

High-Precision, High-Detail Work

plus

iwata

Eclipse

Ultimate Versatility, Reliability and Performance

iwata
Revolution

Quality, Performance and Value



Kustom painting takes pole position with the new Iwata Kustom airbrush series that sports large cups and shines in atomizing solvent-based paints. Teflon packing, large cups, pre-set handles and taller triggers distinguish these airbrushes as Kustom.



HP095986

The MAC Daddy of all airbrushes, the Kustom Micron CM is framed around the Iwata Custom Micron airbrush. The new Kustom Micron CM airbrush provides extreme control of ultra fine-line spray, silky-smooth atomization and ultimate paint-flow control with hand-tuned, hand-adjusted performance.

Kustom Micron CM

- 0.23 mm nozzle "Matched Head System"
- Teflon needle packings
- Large 1/2 oz. (14ml) gravity fluid cup
- Taller trigger for extreme control of trigger action and paint flow
- Pre-set handle
- MAC valve for precise air pressure control
- Pistol-Grip Filter included



HP095962

Triggering the passion of spray-gun users, the Kustom Revolution TR airbrush proves easy to use. The long trigger provides commanding control of the airbrush spray.

Kustom Revolution TR

- 0.30 mm nozzle
- Teflon needle packings
- Large 3/4 oz. (21ml) gravity fluid removable cup
- Spray-gun trigger design
- Pre-set handle
- Pistol-Grip Filter included

VIMFA450



Pistol-Grip Filter included

Every Iwata Kustom Series Airbrush features the Iwata Pistol-Grip Filter.

A preferred airbrush for users who need ultimate control of fine-line work and medium background spraying, the Kustom Hi-Line CH boasts a MAC valve that supplies precise air control to the head of the airbrush for ultimate control.

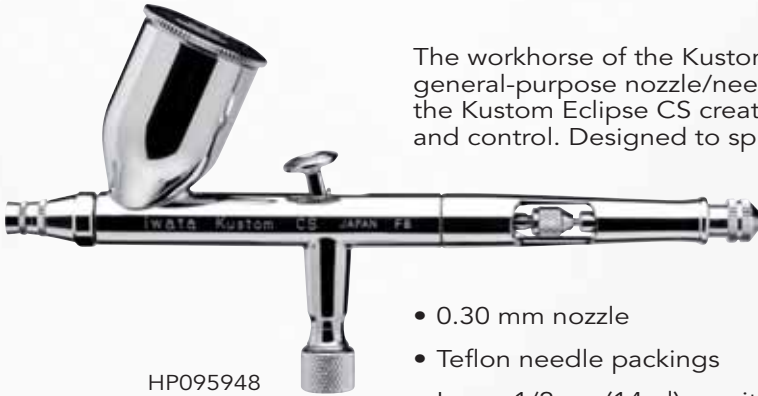


HP095955

Kustom Hi-Line CH

- 0.30 mm nozzle
- Teflon needle packings
- Large 1/2 oz. (14ml) gravity fluid cup
- Taller trigger for extreme control of trigger action and paint flow
- Pre-set handle
- MAC Valve for precise air-pressure control
- Pistol-Grip Filter included

The workhorse of the Kustom line, the Kustom Eclipse CS features a large general-purpose nozzle/needle combination. Still maintaining fine-line control, the Kustom Eclipse CS creates wide background sprays with fine atomization and control. Designed to spray metallic, pearlescent and base coat paints.



HP095948

Kustom Eclipse CS

- 0.30 mm nozzle
- Teflon needle packings
- Large 1/2 oz. (14ml) gravity fluid cup
- Taller trigger for extreme control of trigger action and paint flow
- Pre-set handle
- Pistol-Grip Filter included





Custom Micron

Absolute Precision for the Elite Professional

For the elite professional who demands precise and accurate control of very detailed spraying, the Custom Micron Series is built to be the "best of the best", hand-tested and adjusted by the world's leading airbrush technicians.



13407730

CM-C Plus

- 0.23 mm nozzle
- A breakthrough technology, the Micro Air Control (MAC) Valve enables infinite control of the airflow at the head of the airbrush, which provides even more control of stippling, fine details and finely atomized background spraying
- The new solvent-proof Teflon™ needle packing allows for the use of automotive or other solvent-based paints
- The funnel shape of the redesigned gravity-feed cup lets the airbrush be used with only a couple of drops of paint, ensuring a fast and thorough clean up
- A cutaway handle enables users to grab the needle-chucking nut and quickly pull back the needle to flush paint out of the cup and paint passageways for a quick and easy clean up



13407520

CM-C

- 0.23 mm nozzle
- Ideal for professional use where heavier paints are required or when larger work is being created
- The Iwata Custom Micron matched-head system ensures superior atomization
- Features a larger 1/3 oz. (9 ml) gravity-feed color cup for working with large volumes of paint

Custom Micron Head System Superb Performance

The unique feature of the hand-matched head system means all of the parts in the head are assembled, tested and adjusted until the spray characteristics are as perfect as an airbrush can be. Available only as a set, the head systems can be interchanged for maximum reliability and ultimate performance. Spare head systems can be purchased to ensure the Custom Micron will always spray to its fullest potential.

The unique test spray pattern is included with all Custom Micron Series and High Performance Series Airbrushes.





13407500

CM-B

- 0.18 mm nozzle
- The smallest nozzle and needle combination for the most precise and accurate control of detail spraying
- Features a 1/16 oz. (1.8 ml) gravity-feed cup that cleans quickly for rapid color changes
- A highly polished, hardened stainless-steel needle provides an exceptionally smooth transition from detail to mid-range spraying



13407510

CM-SB

- 0.18 mm nozzle
- The same features of the Custom Micron B except it has a 1/8 oz. (3.5 ml) side-feed cup, which is engineered for right- and left-handed use
- Because it is side-fed, a view directly over the top of the airbrush allows for up-close, fine detail work
- For larger artwork, the Custom Micron versatility is enhanced by an optional 1/4 oz. (7 ml) side-feed cup, 1/2 oz. (14 ml) gravity-feed cup or a 1 oz. (28 ml) siphon bottle





Featuring the ultimate in air control directly at the nozzle with Iwata's new Micro Air Control (MAC) Valve Technology, the Hi-Line Series is designed for artists who need extreme control of detailed spraying. The Hi-Line Series is now made with Teflon needle packing, a dual-purpose cutaway, pre-set handle and one-piece auxiliary lever/needle chucking guide.



HP-AH

- 0.2 mm nozzle
- Larger threads on the nozzle offer a more secure fit and better centering of the nozzle on the body
- Sprays with one drop of paint in its 1/32 oz. (0.9 ml) fluid cavity

13409000



HP-BH

- Like the HP-AH, it has a 0.2 mm nozzle but has a larger 1/16 oz (1.8 ml) cup for holding more paint
- The gravity-feed cup features a smooth inside taper that provides for a quick and easy clean up

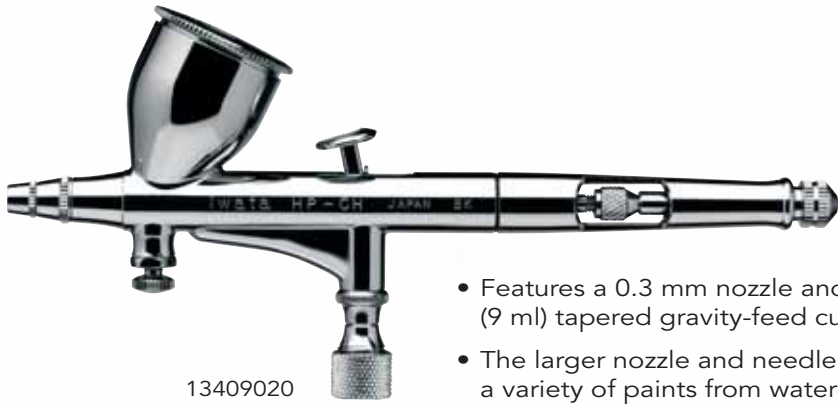
13409010

Micro Air Control (MAC) Valve

A breakthrough technology, the Micro Air Control (MAC) Valve enables infinite control of the airflow at the head of the airbrush, which is different than just regulating the air pressure at the compressor.

- Lets users spray a coarse stippling effect to full atomization with a quick turn
- For fine line or detailed work, it can be adjusted to create the optimum airflow for maximum control of the paint output
- By fully opening the MAC Valve, the airbrush can quickly be cleaned during color changes or for wide background spraying





13409020

HP-CH

- Features a 0.3 mm nozzle and a large 1/3 oz. (9 ml) tapered gravity-feed cup
- The larger nozzle and needle makes this an ideal airbrush for spraying a variety of paints from watercolors to solvent-based automotive paints



HP-TH

13408380

- 0.5 mm nozzle
- With both round and flat patterned aircaps
- Teflon needle packings
- Large, 1/2 oz. (14cc) removable gravity-feed fluid cup
- MAC Valve (Micro Air Control)
- Spray-gun trigger design
- Pre-set handle



iwata

High Performance

High-Precision, High-Detail Work

plus

Renowned as the professional's workhorse, the popular High Performance Series has just been pumped up with these inspired new features: Teflon™ needle packing, a dual-purpose, cutaway and pre-set handle and a one-piece auxiliary lever/needle-chucking guide.



13407290

HP-A Plus

- Features a 0.2 mm nozzle and needle combination for high-precision, detailed spraying
- The 1/32 oz. (0.9 ml) fluid cavity is perfect for spraying small amounts of media in a small area



13409540

HP-B Plus

- 0.2 mm nozzle
- Similar to the HP-A Plus except with a larger 1/16 oz. (1.8ml) gravity-feed color cup

HP-BC Plus



13407620 (ø 0.3 mm)
13407270 (ø 0.4 mm)

- A high-detail, high-precision, bottom-feed airbrush for artists who need quick color changes with a certain set of colors
- Similar in spray characteristics and needle/nozzle size to the HP-C Plus, it has very good atomization and is extremely reliable

High-Performance Assembly

Each nozzle is precisely made on the industry's most sophisticated machinery. They are hand tested to assure accurate control and fine atomization of the spray, and they are self-sealing, which eliminates the need for messy sealers. Unlike conventional brass nozzles, steel alloys are more durable and resist damage from harsh chemicals.





13407570

HP-SB Plus

- 0.2 mm nozzle
- Similar to both the HP-A Plus and HP-B Plus, except that it has a 1/15 oz. (1.5 ml) side-feed color cup
- Side-feed cup allows for right or left-handed use, and for slower detail spraying and better vision of the work surface
- Optional: 1/4 oz. side-cup, 1/2 oz. gravity cup or a 1 oz. siphon bottle

HP-C Plus



13407550

- 0.3 mm nozzle
- A practical choice for most airbrush uses
- Its larger 1/3 oz. (9 ml) gravity-feed cup and larger (0.3-mm) needle/nozzle configuration allow for use with most media
- An airbrush that does it all - from fine hairlines to finely atomized background spray, along with an entire range of stippling effects
- The gravity-feed cup is useful for mixing custom colors and allows for quick color changes
- Short paint passageway from the cup to the front of the airbrush gives it a responsive feel and allows it to be one of the quickest airbrushes in the industry



iwata Eclipse

Ultimate Versatility, Reliability and Performance

The multi-purpose, high-paint-flow, high-detail airbrushes of the Eclipse Series cover a wide range of uses. Commonly used to spray premixed or heavier paints, they are well suited for uses demanding precise control of spray when applying moderate-to-large amounts of paint to a variety of surfaces and to various-sized areas.

The Eclipse Series has established a new benchmark for excellence in an all-purpose airbrush.



13402010

HP-CS

- Gravity-feed airbrush features a unique 0.3 mm needle and nozzle combination for fine-detail spraying, but with high-paint-flow capacity
- Generous 1/3 oz. sized cup is designed with a new funnel shape, which makes for easy clean up and more efficient paint flow
- Automotive artists, fine artists and students will appreciate how well the Eclipse CS sprays heavier acrylics and Medea Textile Colors, while maintaining high-detail spray characteristics



13402020

HP-SBS

- Side-feed airbrush features a 0.3 mm needle and nozzle combination with the option of four cup sizes - the standard 1/8 oz. side cup, a 1/4 oz. side cup, a special 1/2 oz. gravity-feed side cup or a 1 oz. siphon-feed bottle
- Ideal for custom automotive graphics and murals, as well as for fine-arts work that requires custom color mixing and thicker paints
- The Auto-Graphics version of the HP-SBS is similar to the standard HP-SBS except it comes with a large 1/2 oz gravity-feed cup and a 1 oz. siphon-feed bottle

HP-G3/G5

NEW HP-G3/G5 for small repairs, mural, tanning and hobby

- Compact and lightweight (205g only)
- Fine atomization
- Ø 0.3 (HP-G3) - 0.5 (HP-G5)
- Twilight chrome plated body
- Suitable for solvent and water base paints
- PTFE packing
- 70 cc gravity cup
- Air nipple G 1/4"
- Fluid nipple G 1/8"
- Works well with the NEW Iwata IS 925 HT Compressors



HP096365 HP-G3
HP097485 HP-G5



13407210

HP-BS

- Gravity-feed airbrush features a 0.3 mm needle and nozzle combination with a convenient 1/16 oz. sized cup
- The improved funnel design of the cup makes for easy clean up and more efficient paint flow
- Ideal for nail and beauty applications



13402000*

HP-BCS

- Bottom-feed airbrush features a 0.5 mm needle and nozzle combination
- Sets the industry standard for high-performing, general-purpose, high-paint-flow airbrushes
- Versatile, reliable performance - this airbrush does it all
- 1 oz. (28 ml) suction feed bottle (included)



Eclipse Nozzle/Head Assembly

The drop-in hardened steel nozzles are self-centering for perfect alignment and quick, easy assembly. High-paint flow, coupled with ultimate control through the entire spray range, is Lwata's trademark with the Eclipse style of airbrushes. Now, with the new interchangeable 0.30 mm high-flow nozzle/needle combination, even finer detail and control can be achieved.

* the image refers to HP-BCS + VIM4802 (2 oz) jar

iwata *Revolution*

Quality, Performance and Value

Start off airbrushing with the industry leader - Iwata. Made for users at all levels, the Revolution Series features top-of-the-line airbrushes at great value. With breakthrough technology and performance, these airbrushes outperform all others in their price range.



13409670

HP-AR

- 0.3 mm nozzle
- A gravity-feed airbrush designed for quick changes of custom mixed colors
- Versatile for moderate detail to background spraying
- Perfect for general-purpose art-and-craft projects, as well as model-railroad detailing, R/C car bodies, plastic kits and automotive painting



13409690

HP-BR

- 0.3 mm nozzle
- A gravity-feed airbrush designed for quick changes of custom mixed colors
- Versatile for moderate detail to background spraying
- Perfect for general-purpose art-and-craft projects, as well as model-railroad detailing, R/C car bodies, plastic kits and automotive painting



13407100

HP-CR

- 0.5 mm nozzle
- A gravity-feed airbrush designed for quick changes of custom mixed colors
- Versatile for moderate detail to background spraying
- Perfect for general-purpose art-and-craft projects, as well as model-railroad detailing, R/C car bodies, plastic kits and automotive painting



13407120

HP-SAR

- 0.5 mm nozzle
- A breakthrough in single-action airbrush design
- Built with the same quality and performance as the dual-action airbrush
- Perfect for those seeking high performance in a **single-action** design



13409710

HP-TR1

The HP-TR1 (0.3 mm) comes with a 1/4 oz. side-mount color cup, while the HP-TR2 (0.5 mm) sports a 1/2 oz. side-mount cup.

- Ergonomic, balanced handle makes for easy, level spraying.
- The FA450 Pistol Grip Filter can be used with the 1oz. and 2oz. side-mount bottle sets (sold separately).



13409720

HP-TR2

The HP-TR1 (0.3 mm) comes with a 1/4 oz. side-mount color cup, while the HP-TR2 (0.5 mm) sports a 1/2 oz. side-mount cup.

- Ergonomic, balanced handle makes for easy, level spraying.
- The FA450 Pistol Grip Filter can be used with the 1oz. and 2oz. side-mount bottle sets (sold separately).



13407110*

HP-BCR

- 0.5 mm nozzle
- A bottle-feed, dual-action airbrush for general-use spraying
- Siphon-feed model makes it easy to swap bottles of specific colors quickly
- Useful for T-shirt painting, model-railroad landscapes, R/C car painting, airplane models and other general art hobby and craft projects
- 1 oz. (28 ml) suction feed bottle (included)

* the image refers to HP-BCR + VIM4803 (3 oz) jar



iwata COMPRESSORS

Now available for the beginning or casual airbrush user, Iwata Studio Series Compressors utilize the latest technology to fulfill your every airbrushing need.

It has never been easier to start with Iwata since all Studio Series Compressors are sold complete with fittings, filters, airhoses and an adapter to fit any airbrush.

Intelligent Power: Featuring Iwata's Smart Technology, the Smart Jet Pro compressor is perfect for the occasional and professional artist doing general airbrush applications. It's powerful, compact, reliable and quiet.



Featuring the powerful twin-pump, 1/6 Hp motor, the Power Jet Pro compressor is equipped with twice the features of the Power Jet Lite like two air pressure regulators for precise adjustment of airflow at two individual workstations. Built with Iwata's Smart Technology, it automatically shuts off when not in use. Economically priced, the Power Jet Pro has a 2 litre tank reservoir and delivers all the power necessary for use with the high-paint-flow, multi-purpose Iwata Eclipse airbrush and the new Eclipse G6 pistol grip airbrush. Like all Iwata Studio Series compressors, the Power Jet Pro comes complete with an airhose and adapters so it can hook up to any brand of airbrush.



15956440

IS 50 SILVER JET

Powerful, compact, reliable and quiet, the Silver Jet is a single-person, light-duty, entry-level compressor.

It features working pressure adjustable from 10-18 psi, perfect for cosmetics, tanning, hobbies/models, fingernail painting, bakery and general airbrushing.

The Silver Jet includes a coiled airhose, Iwata Pistol-Grip Filter, pressure adjustable knob, handle, airbrush holder, pressure gauge and convenient airhose connector.

IS 850 SMART JET

- Zero-maintenance, oil-less piston air compressor
- Built-in airbrush holder
- Extra hose for enhanced moisture separation
- Moisture filter also prevents pulsation
- Mounted air pressure gauge
- Bleed valve airflow adjustment to lower air pressure
- High-strength polyurethane hose fits Iwata airbrushes
- On/off switch
- Size: 10 x 7 x 6 in. (25 x 18 x 16 cm)
- Smart Jet Technology



15956190



15956100

IS 875 SMART JET PRO

- Zero-maintenance, oil-less piston air compressor
- Built-in airbrush holder
- Protective Outer Case
- Moisture filter with Air Regulator and Gauge (also prevents pulsation)
- Bleed valve adjustment to release moisture
- High-strength polyurethane hose fits Iwata airbrushes
- On/off switch
- Size: 10.5 x 12 x 6 in. (26.5 x 31 x 15.5 cm)
- Smart Jet Technology



IS096181

IS 875 HT

- Motor: 150 W
- Max. pressure: 4,2 bar
- Air delivery: 23 L/min
- Weight: 5,5 Kg
- Size: 28 x 16 x 27,5 cm
- 3 m air hose (HPA-BH32)
- Smart Jet Technology



15956130

IS 925 POWER JET LITE

- Adjustable pressure regulator
- Moisture filter
- Strong protective outer case
- Built-in airbrush holder
- Size: 10.5 x 12 x 6 in. (26.5 x 31 x 15.5 cm)
- Smart Jet Technology
- 2X Sprint Jet Power



IS096198

IS 925 HT

- Motor: 220 W
- Max. pressure: 4,2 bar
- Air delivery: 39 L/min
- Weight: 7,1 Kg
- Size: 28 x 16 x 33 cm
- 3 m air hose (HPA-BH32)
- Smart Jet Technology
- 2X Sprint Jet Power



15956360

IS 975 POWER JET PRO

- 2 litre air storage tank
- Zero pulsation
- Air reserve for spraying at higher air pressures
- Typically, stored-air normally cools, which is better for maximum moisture separation
- DUAL Adjustable pressure regulators
- DUAL Moisture filters
- DUAL Mounted pressure gauges
- DUAL Quick disconnect ports
- DUAL Built-in airbrush holders
- Strong protective outer case
- Size: 13 x 9 x 7 in. (33 x 23 x 18 cm)
- Weight: 11.9 kg
- Smart Jet Technology
- 2X Sprint Jet Power



ISO96280

IS 975 MB

Iwata Compressor IS 975 Power Jet Pro Studio Series with Mobile Case.

- Motor: 125 W
- Max. pressure: 5,5 bar
- Air delivery: 34 L/min
- Weight: 14 Kg
- Size: 36 x 20 x 64 cm
- 3 m air hose



Smart Jet Technology

- Compressor shuts itself off automatically when not in use
- Less heat-related moisture build-up
- Produces full-capacity air on demand
- Reduces running time
- Less motor wear means longer compressor life
- Inherently quieter in public environments



2x Sprint Jet Power

- Zero-maintenance, oil-less piston compressor
- Powerful 1/6-hp motor
- Airflow 1.2 CFM (34pmM)



Triple Action Handle

The Triple Action Handle gives you instant access to the needle for fast full flushing and quick and easy replacement or cleaning. A unique pre-set handle feature actually holds the needle back from the nozzle instead of limiting trigger movement, allowing for more consistent spray time after time. An added bonus to the Triple Action Handle is it has a threaded needle knob on the rear of the handle to store your needle cap, too! The triple action handle gives you one effective solution to your airbrush cleaning process.

The Triple Action Handle is sold as a set with one silver handle or with an additional five colored handles, silver, orange, blue, red and green.



VIMK150 Set with one (1) Silver Handle
 VIMK155 Set with five (5) Colored Handles



AIR-PORT™ AIRBRUSH WORK STATION

Patent Pending
 BY KARAJEN CORP.

The AIR-PORT™ AIRBRUSH WORK STATION provides a simple and convenient way to keep you organized. Easily mount your AIR-PORT™ with its sturdy mounting magnets anywhere you work! It magnetically attaches to metal surfaces with excellent reliability. Or, you can bolt it to a desired location for permanent mounting. Made of solid 18-gauge steel construction with a powder-coated finish, the AIR-PORT™ holds 3 airbrushes and all your airbrushing supplies, so you can keep focused on your work and not be wondering "Where did I put that...!?"



AIR-PORT™ Airbrush Work Station

VIMKJ200 Air-Port™ Magnetic Mounting
 Size: 22,9w x 12,7d x 6,35h cm - Weight: 1,81 kg

VIMKJ201 Air-Port™ Bolt-on Mounting (Non Magnetic)
 Size: 22,9w x 12,7d x 6,35h cm - Weight: 1,36 kg

AIR-PORT™ HANGER™

Patent Pending
 BY KARAJEN CORP.

The AIR-PORT HANGER™ will hang most styles of airbrushes. Its adjustable hanging positions accommodate for the most varying types of airbrush shapes and feed types. The AIR-PORT HANGER™ is constructed of solid 18 gauge steel for long lasting durability. It will attach securely to most metal surfaces by its powerful mounting magnet, or it can be bolted permanently to any work area.



ADJUSTABLE SLIDING ARMS
 ACCOMMODATE VARIOUS AIRBRUSH STYLES



AIR-PORT Hanger™

VIMKJ100 Air-Port Hanger™ Magnetic Mounting
 VIMKJ101 Air-Port Hanger™ Bolt-on Mounting (Non Magnetic)



Crystal Clear Bottle Sets (for wb paints only)

VIM4501	Crystal clear cylinder 1 oz - 28 ml
VIM4501P	Crystal clear cylinder 1 oz - 28 ml
VIM4502	Crystal clear cylinder 2 oz - 56 ml
VIM4502P	Crystal clear cylinder 2 oz - 56 ml
VIM4504	Crystal clear cylinder 4 oz - 112 ml
VIM4504P	Crystal clear cylinder 4 oz - 112 ml
VIM4602	Crystal clear jar 2 oz - 56 ml
VIM4602P	Crystal clear jar 2 oz - 56 ml

N.B.: P = Plastic neck



High Strength Translucent Plastic Bottle Sets (for both solvent and wb paints)

VIM4701	Translucent plastic cylinder 1 oz - 28 ml
VIM4701P	Translucent plastic cylinder 1 oz - 28 ml
VIM4702	Translucent plastic cylinder 2 oz - 56 ml
VIM4702P	Translucent plastic cylinder 2 oz - 56 ml
VIM4704	Translucent plastic cylinder 4 oz - 112 ml
VIM4704P	Translucent plastic cylinder 4 oz - 112 ml
VIM4802	Translucent plastic jar 2 oz - 56 ml
VIM4802P	Translucent plastic jar 2 oz - 56 ml
VIM4803	Translucent plastic jar 3 oz - 84 ml
VIM4803P	Translucent plastic jar 3 oz - 84 ml
VIM4804	Translucent plastic jar 4 oz - 112 ml
VIM4804P	Translucent plastic jar 4 oz - 112 ml

N.B.: P = Plastic neck



Siphon Bottle Sets for Side Feed Airbrushes

VIM4501S	Crystal clear cylinder 1 oz - 28 ml
VIM4502S	Crystal clear cylinder 2 oz - 56 ml
VIM4501S	Translucent plastic cylinder 1 oz - 28 ml
VIM4502S	Translucent plastic cylinder 2 oz - 56 ml



Gravity Bottle Sets for Side Feed Airbrushes

13409130	Side cup (small) 1,5 ml
13409140	Side cup (medium) 7 ml
13409460	Side cup (large) 15 ml



Glass Bottle Sets

VIM4052	Glass bottle set ¾ oz - 21 ml
VIM4202	Glass bottle set 1½ oz - 42 ml



No-Rust Bottle Cap Sets

VIM49020	Bottle cup set for 20 mm bottle opening
VIM49024	Bottle cup set for 24 mm bottle opening
VIM49038	Bottle cup set for 38 mm bottle opening

Fast Blast Bottle Cap Sets

VIM49020P	Bottle cup set for 20 mm bottle opening
VIM49024P	Bottle cup set for 24 mm bottle opening
VIM49038P	Bottle cup set for 38 mm bottle opening

Side Feed Bottle Cap Sets

VIM49020S	Side feed cap set for 20 mm bottle opening
VIM49024S	Side feed cap set for 24 mm bottle opening



Cobra Coil Airhoses

- 13409030 HPA CH 41 Coil type air hose (1/8 - 1/8)
- 13409080 HPA CH 32 Coil type air hose (1/4 - 1/8)

Straight Shot Airhoses

- 13409430 HPA CH 31 Straight air hose (1/8 - 1/8)
- 13409090 HPA CH 32 Straight air hose (1/4 - 1/8)

Nylon-Covered Braided Airhoses

- 13409520 HPA BH 32 Braided hose black (1/4 - 1/8)
- VIMBT010 Nylon covered braided air hose 10' (1/4 - 1/8)
- VIMBT050 Nylon covered braided air hose 10' (1/4 - 1/4)

Airbrush Holders

- 13409070 HPA-H2 Coil airbrush hanger
- VIMAH200 Deluxe airbrush holder with regulator bracket



Airbrush Cleaning Pot
(for easy cleaning and colour change)

- VIMNAC201 Table top cleaning station



Airhoses quick disconnect adaptors

- 13409470 HPA-J1 Airbrush joint 1/8F - 1/4M
- 13409480 HPA-J2 Airbrush joint 1/4F - 1/8M
- 13409060 HPA-QJP quick joint (male + female)
- 13409450 HPA-QJP3 Male plug 3PCS/PACK
- VIM0105 Airhose joint set (brass)



Multiple-Valve Assemblies

- VIM012004 2-way valve assemblies
- VIM012005 3-way valve assemblies



Air Filters and Regulators

- 13409510 HPA-FR Airbrush filter regulator
- 13409810 HPA-R Airbrush regulator
- VIMFA450 Pistol grip moisture filter
- VIMFA500 Moisture filter
- VIMFA600 Moisture filter with regulator and gauge
- VIMFA700 Pressure regulator and gauge



Airbrush Cleaners and Lubricant

- VIM650004 Airbrush cleaner 4 oz / 112 ml
- VIM65008 Airbrush cleaner 8 oz / 224 ml
- VIM650016 Airbrush cleaner 16 oz / 448 ml
- VIM650032 Airbrush cleaner 32 oz / 896 ml
- VIM15001 SUPER LUBE lubricant 1/2 oz / 14 ml



AIRBLAST Regulator Adaptor for Air Blast Canned Air

- VIM020100 AIRBLAST Regulator Adaptor



Freehand™ AIRBRUSH TEMPLATES

SOLVENT PROOF!
EASILY USED WITH WATER-BASED
AND SOLVENT-BASED PAINTS.

The Artool™ Freehand™ Airbrush Templates are a real asset to anyone who uses an airbrush. These SOLVENT PROOF templates can be easily flexed or curved around irregular shaped surfaces and cleaned with solvents without being damaged. Delineate shapes by matching the contours of the Freehand™ Airbrush Templates with the subject matter. Simply rotate or flip-flop the Freehand™ Airbrush Templates to find the shape that works best or raise the template slightly to create a soft edge. However you use these templates, you're sure to create something great!

The ESSENTIAL SEVEN™ SIGNATURE SERIES

ALL SEVEN
VIMFHSP



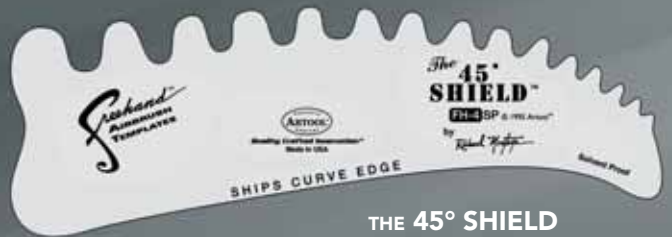
BY EDDIE YOUNG
VIMFH1SP



BY EDDIE YOUNG
VIMFH2SP



THE 360° SHIELD
BY RICHARD MONTOYA
VIMFH3SP



THE 45° SHIELD
BY RICHARD MONTOYA
VIMFH4SP



MINI SHIELD
BY ANDREA MISTRETТА
VIMFH5SP



SUPER SHIELD
BY ANDREA MISTRETТА
VIMFH6SP



THE BIG SHIELD
BY GABE MCCUBBIN
VIMFH7SP

THE WAVE MAKER™

BY MARK "THE SHARK" RUSH



THE WAVE MAKER
VIMFH8

The ANGLE MASTER™



THE ANGLE MASTER
BY GARY PADILLA
VIMFH9SP



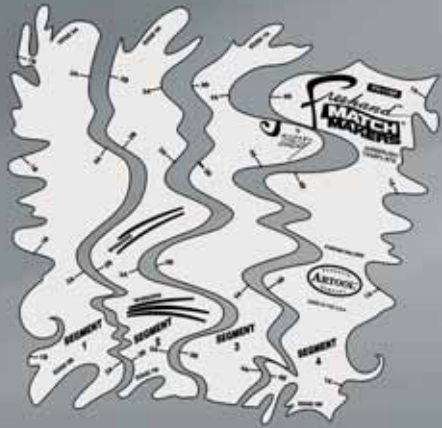
PIN-UP SHIELD™

PIN UP SHIELD
BY EDWARD REED
VIMFH10



BY RADU VERO

SOLD AS SET
VIMFHRVSP



MATCH MAKERS
BY MICHAEL CACY
VIMFH11SP



THE PHAROAH



THE BIRD

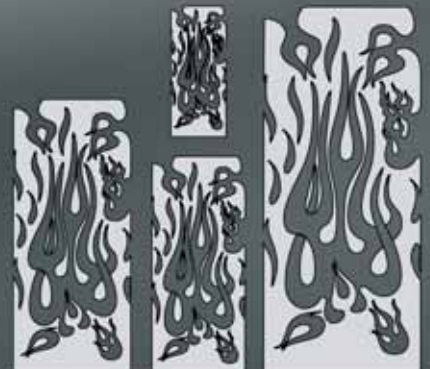


BY "MR. J" JULIAN BRAET

COMPLETE SET
VIMFHF3



THE MEDIUM
VIMFHF1



THE MULTIPLE
VIMFHF2



BY **CRAIG FRASER**

ALL FOUR
VIMFHF0R5SP



FLAME-DANGO
VIMFHF0R1SP



OL'SCHOOL
VIMFHF0R2SP



SLASH
VIMFHF0R3SP



FUNKADELIK
VIMFHF0R4SP



ALL SIX
VIMFHF0R12



VAN FLAMIN
VIMFHF0R6



CLASSICO
VIMFHF0R7



FIRE BALZ
VIMFHF0R8



FLAMGASM
VIMFHF0R9



GOThICA
VIMFHF0R10



SPOT
VIMFHF0R11



ALL FOUR
VIMPTR5SP



RED
VIMPTR1SP



WHITE
VIMPTR2SP



AND BLUE
VIMPTR3SP



EAGLE ONE
VIMPTR4SP



TIKI-MADNESS
VIMFHFK1SP



BULLET-RIDDEN
VIMFHFK2SP



CHEETAH-PIMP
VIMFHFK3SP

ALL SIX
VIMFHFK7SP



DIAMOND-PLATE
VIMFHFK4SP



CLOUD-9
VIMFHFK5SP



BRAINIAC
VIMFHFK6SP



PUZZLED
VIMFXII8



NUTZ N' BOLTZ
VIMFXII9

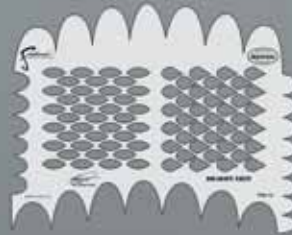


GEAR HEAD
VIMFXII10

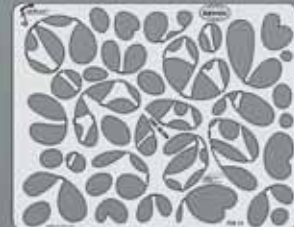
ALL SIX
VIMFXII14



DOLLA' BILL
VIMFXII11



DRAGON SKIN
VIMFXII12



THE BLOB
VIMFXII13



GLYPHS
VIMFX315SP



UNCHAINED
VIMFX316SP



THE WEB
VIMFX317SP

ALL SIX
VIMFX321SP



BLADES
VIMFX318SP



MUSIKA
VIMFX319SP



BARBY
VIMFX320SP



SOLD AS SET
VIMFHF428



WRENCHED
VIMFHF422



FRONDS
VIMFHF423



STRAEG
VIMFHF424



CLASSIC CAMO
VIMFHF425



DIGITAL CAMO
VIMFHF426



GATOR
VIMFHF427



ALL SIX
VIMKKFX21



FLY BALLZ
VIMKKFX15



PISTONS & PLUGS
VIMKKFX16



LUCKY 7
VIMKKFX17



ACES N'EIGHTS
VIMKKFX18



SACRED HEART
VIMKKFX19



MARTINI TIME
VIMKKFX20



SOLD AS SET
VIMFHSPFX7



JUNK
VIMFHSPFX1



MECHANIX
VIMFHSPFX2



GAUGES
VIMFHSPFX3



SWITCHES
VIMFHSPFX4



KLOCKWORX
VIMFHSPFX5

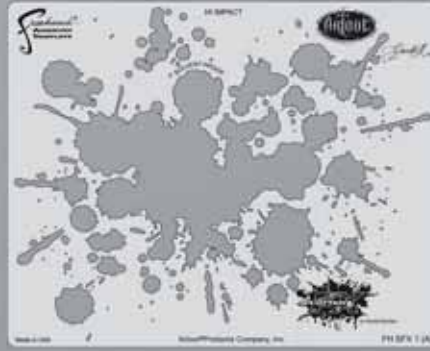


GEAR DRIVES
VIMFHSPFX6

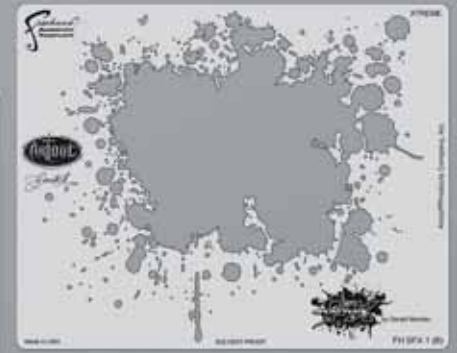


BY **GERALD MENDEZ**

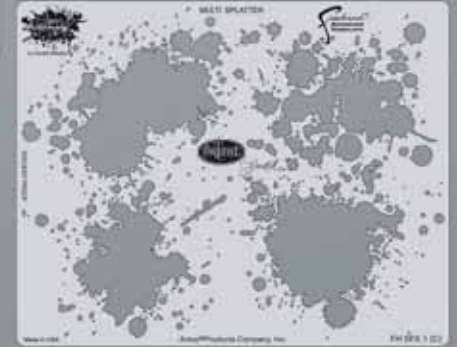
SOLD AS SET
VIMFHSFX1



HI IMPACT
FH SFX 1 (A)



XTREME
FH SFX 1 (B)



MULTI SPLATTER
FH SFX 1 (C)

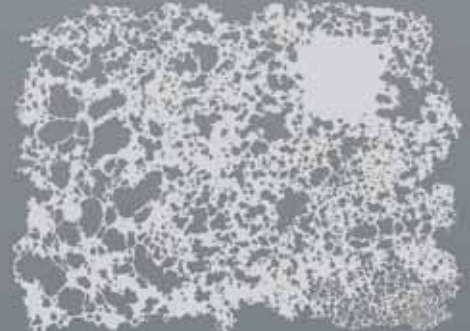


SOLD AS SET
VIMFHTFX1

MASTER



COSMIC



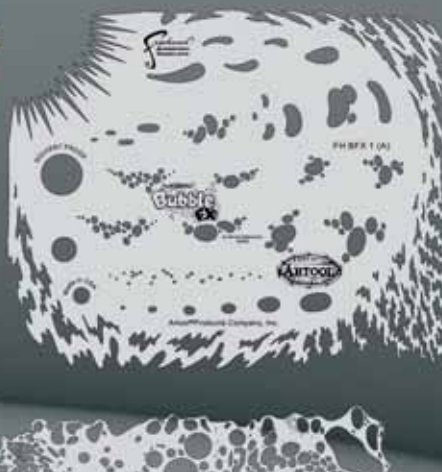
ORGANIC

BY **DENNIS MATHEWSON**



FH BFX 1 (A)

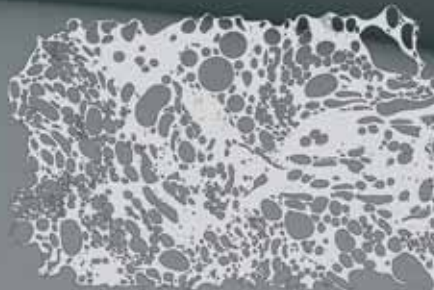
SOLD AS SET
VIMFBFX1



FH BFX 1 (B)



FH BFX 1 (C)



FH BFX 1 (D)



ALL THREE
VIMFHSK4SP



THE MULTIPLE
VIMFHSK1SP



THE FRONTAL
VIMFHSK2SP



THE SCREAMING
VIMFHSK3SP

BY **CRAIG FRASER**



ALL FOUR
VIMFHSK9SP



NITE & DAY
VIMFHSK5SP



DEVIL OR ANGEL
VIMFHSK6SP



BONZ
VIMFHSK7SP



MENAGERIE
VIMFHSK8SP



ALL FIVE
VIMFHSK15SP



PETTING ZOO
VIMFHSK10SP



EVIL-HORDE
VIMFHSK11SP



BUCCANEER
VIMFHSK12SP



VOO DOO
VIMFHSK13SP



BONZ II
VIMFHSK14SP



ALL FOUR
VIMFHSK20



FRONTAL II
VIMFHSK16



MULTIPLE II
VIMFHSK17



SCREAMIN' II
VIMFHSK18



LUCKY 13
VIMFHSK19



ALL THREE
VIMFHSK24



HEADS-UP
VIMFHSK21



THE SCREAM
VIMFHSK22



PROFILE
VIMFHSK23





**LIMITED EDITION
SKULLDUGGERY TEMPLATE**
VIMFHSK25



ALL SIX
VIMFHSK32



MR. POTATO BONZ
VIMFHSK26



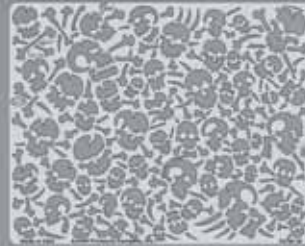
MR. POTATO BONZ STUPH #1
VIMFHSK27



MR. POTATO BONZ STUPH #2
VIMFHSK28



BURIALD GROUND
VIMFHSK29



KALAVERAS
VIMFHSK30



BONZ III
VIMFHSK31



SOLD AS SET
VIMFHSKLTD



SMALL 14 x 7,5 cm
MEDIUM 20 x 11,5 cm
LARGE 28 x 15 cm
EXTRA LARGE 38 x 19 cm



BY **MIKE LAVALLEE**

SOLD AS SET
VIMFH111



**HELL
RIDERS**

SM 15 x 7,5 cm **LG** 26 x 13 cm
MED 20 x 10 cm **XLG** 35 x 18 cm

SOLD AS SET
VIMFH112

**SMOKIN'
JOES**



SM 15 x 9,5 cm **LG** 26,5 x 16,5 cm
MED 20 x 13 cm **XLG** 35 x 21,5 cm



BY **MIKE LAVALLEE**

SM 15 x 12 cm **LG** 26,5 x 21 cm **MED** 20 x 16 cm **XLG** 35 x 28 cm

CRANIUM™



SOLD AS SET
VIMFHBH1

SCREAMERS™



SOLD AS SET
VIMFHBH2

EIGHT 8 DEAD™



SOLD AS SET
VIMFHBH3



TELL NO TALES
VIMFHPRY1



JOLLY ROGER
VIMFHPRY2



CURSED
VIMFHPRY3

BY **CRAIG FRASER**

ALL SIX
VIMFHPRY7



TORTUGA
VIMFHPRY4



FLYING DUTCHMAN
VIMFHPRY5



PIECES OF EIGHT
VIMFHPRY6

SOLD AS SET
VIMFHGP1

BY **DEBORAH MAHAN**



PIRATE GIRLIE



SHANGHAIED



GIRLIE CHEST



GIRLIE GIRL



MERMAID GIRLIE



SOLD AS SET
VIMFHPUG



**GIRLIE GIRL AND
LITTLE GIRLIE B**



**GOOD AND
GHOT GIRLIAS B**



**GIRLIE GIRL AND
LITTLE GIRLIE A**



**GOOD AND
GOTH GIRLIES A**



**HOT ROD
GIRLIE**



SOLD AS SET
VIMFHPUGII



**STARS STRIPES AND
JESTER GIRLIE**



**STARS STRIPES AND
BOMBS AND SUCH**



SEXY GIRLIE B



GIRLIES BOOTS



PIN-UP GIRLIES 2



SOLD AS SET
VIMFHSG1



FISHY GIRL



LUCKY LADY



SAILOR'S HEART



DANCE TYME

METROPOLIS™

BY **YVONNE MECIALIS**



WING



SERPENT

SOLD AS SET
VIMFHMET1



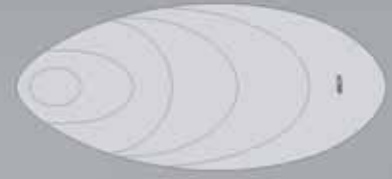
RAZOR



EYE



COMB



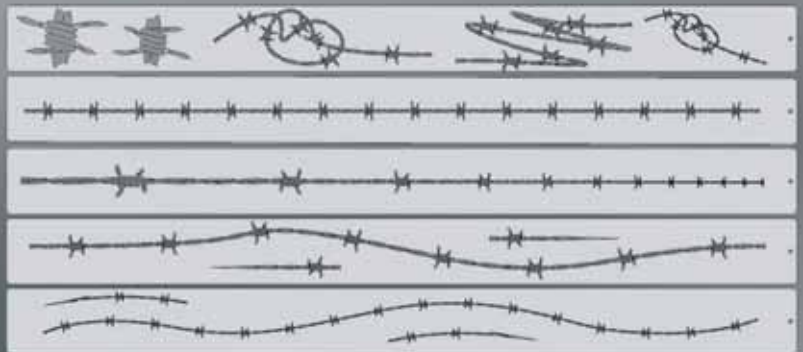
ARCH

ALL FOUR
VIMHFOR5SP



BY **DEAN LOUCKS**

SOLD AS SET
VIMFHLL1

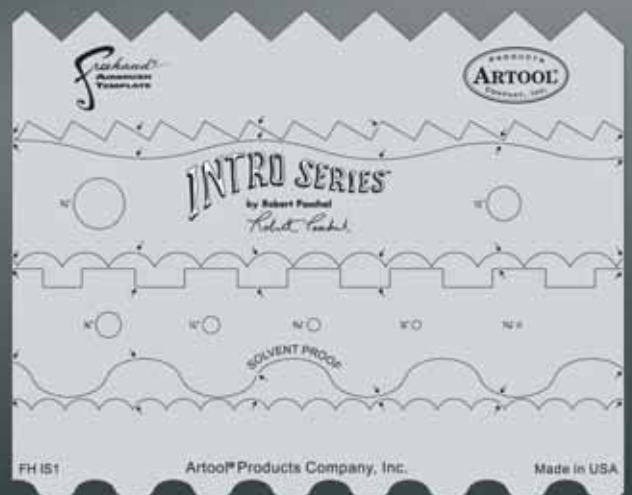


INTRO SERIES™

by Robert Paschal

BY **ROBERT PASCHAL**

INTRO SERIES
BY **ROBERT PASCHAL**
VIMFHIS1



FH IS1

Artool® Products Company, Inc.

Made in USA

TRUE FIRE

BY **MIKE LAVALLEE**



SOLD AS SET
VIMFHTF1

WITH
INSTRUCTIONAL
DVD BY
MIKE LAVALLEE



DIABLO A 45 x 20 cm

INFERNO A 45 x 21,5 cm

WILD FIRE A 45 x 25,5 cm

DIABLO B 34 x 15 cm

INFERNO B 40,5 x 20 cm

WILD FIRE B 35,5 x 20 cm

DIABLO C 25,5 x 13 cm

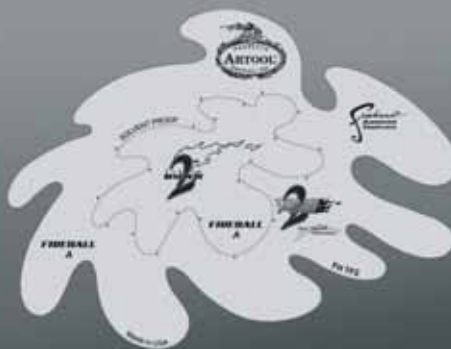
INFERNO C 26,5 x 14 cm

WILD FIRE C 25,5 x 11,5 cm

TRUE FIRE 2



SOLD AS SET
VIMFHTF2



PYRO A 34 x 26,5 cm

FIREBALL A 35,5 x 26,5 cm

BLAZE A 40,5 x 26,5 cm

PYRO B 25,5 x 20 cm

FIREBALL B 26,5 x 20 cm

BLAZE B 30,5 x 20 cm

PYRO C 19 x 15 cm

FIREBALL C 19 x 14 cm

BLAZE C 23 x 14 cm



SOLD AS SET
VIMFHTRM1



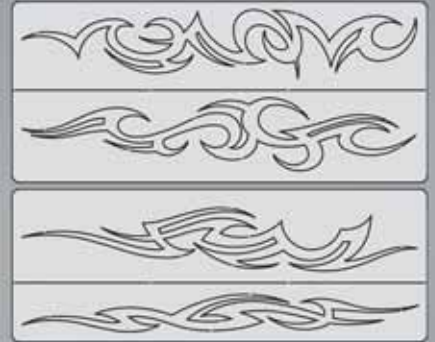
BY **STEVE VANDEMON**



CIRQUE DU TRIBLE
Ø 5" - Ø 10" - Ø 17"



CIRQUE DU TRIBLE
Ø 3,5" - Ø 6" - Ø 9"



SOLD AS SET
VIMFHTRM2



SOLD AS SET
VIMFHSM4



ARACHNOPHOBIA
VIMFHSM2

BY **CRAIG FRASER**



SPIDERZ
VIMFHSM1



WIDOW-MAKER
VIMFHSM3



BY DENNIS
MATHEWSON

ALL SIX
VIMFHKM7



DRAGON
VIMFHKM1



KOI
VIMFHKM2



TSUNAMI
VIMFHKM3



BAMBOO
VIMFHKM4



KANJI MASKS
VIMFHKM5



KANJI SYMBOLS
VIMFHKM6



ALL SIX
VIMFHTM7



TRIBAL TIKI
VIMFHTM1



KONA TIKI
VIMFHTM2



TIKI TROUBLE
VIMFHTM3



TIKI BAR
VIMFHTM4



TOTEM TIKI
VIMFHTM5



ALOHA SPIRIT
VIMFHTM6



TROPIC TRIBALS
VIMFHTM8

ALL SIX
VIMFHTM14



HULA SPIRIT
VIMFHTM9

TWO FACE TIKI
VIMFHTM10



TIKI JOE
VIMFHTM11



FREAKIN' TIKIS
VIMFHTM12



LEILANI
VIMFHTM13



BY BRADLEY M. LOOK

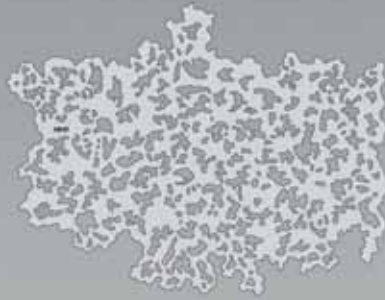
MAKEUP MASTERS™

Beauty Ensemble by Bradley M. Look

SOLD AS SET
VIMMFX1



MOSAIC



RANDOM BREAKUP



SPOT BREAKUP



DOT BREAKUP



DRIPS



EDGE BREAKUP



MAKEUP MASTERS™

Character Troupe by Bradley M. Look

SOLD AS SET
VIMMFX2



MASK



EYEBROWS



CIRCLES



BEAUTY SPOTS

NANO SERIES™

When we started to make the original stencils in the Artool® lineup smaller for, well... smaller jobs, the prospect came up that we should design a specific series for the smallest projects out there, namely the RC car market, 1/8 - 1/25 scale models and diecast kustoms. At the size of a business card, the Artool® Freehand® Airbrush Templates can be used to easily render images on the smallest projects, including the complete side graphics on your car - as long as your car is only 2 or 3 inches long!



SOLD AS SET
VIMFHNS1



SOLD AS SET
VIMFHNS2



TRUE FIRE® NANOS

SOLD AS SET
VIMFHNS3



DRACO™ NANOS



SKULLOPHENIA™ NANOS

MINI SERIES™

The eye-popping, ever-popular Artool Freehand Airbrush Templates for the crowd of kustom automotive painters is now in a new size! The new Artool MINI SERIES Freehand Airbrush Templates are PERFECT for all 1/8th, 1/10th and 1/12th model scales and are especially HOT! HOT! HOT! for RC cars, model airplanes and trains, model cars and kits, figure models, body art and a myriad of kustom automotive applications!



VIMHFHOR5MS



VIMHFHOR2MS



VIMPTR5MS



VIMFHKFX7MS



VIMHFHXII14MS



VIMHFHX321MS



VIMHFHX428MS



VIMFHKKFX21MS



VIMFHSPFX7MS



VIMHFTFX1MS



VIMFHSK4MS



VIMFHSK9MS



VIMFHSK15MS



VIMFHSK20MS



VIMFHSK24MS



VIMFHSK32MS



VIMFHPRY7MSMS



VIMFHGP1MS



VIMFHPUGMS



VIMFHPUGIIMS



VIMFHSGMS



VIMHFTFMS1



VIMFHSM4MS



VIMFHKM7MS



VIMHFTM7MS



VIMHFTM14MS

ARTIST BRIDGE

Patent No. D368,929

Made in U.S.A.



The Ultimate Bridge for Painting, Drawing, Airbrushing and More!

With the non-flexing Artist bridge you will never smear or smudge your artwork again because you are always resting an 1/8" above your work. You can control all soft and wet mediums with confidence, whether rendering details or cutting in accurate line work. Use paintbrush, pastels, charcoal, markers or airbrush with professional results every time!

VIMMRC12	Clear Acrylic	Artist Bridge 12" (30 cm)
VIMMRC18	Clear Acrylic	Artist Bridge 18" (45 cm)
VIMMRA18	Alluminium	Artist Bridge 18" (45 cm)
VIMMRA24	Alluminium	Artist Bridge 24" (60 cm)
VIMMRA30	Alluminium	Artist Bridge 30" (75 cm)
VIMMRA36	Alluminium	Artist Bridge 36" (90 cm)

CUTTING RAIL®

Patent No. D360,149



Cut Straight and Safe!

Thanks to the patented raised-edge design, the Cuttingrail® prevents sharp blades from hopping over the top and cutting your fingers. The non-slip backing locks onto any surface for extra protection and safety. Cut sign vinyl, paper, board, frisket or textiles the safe way!

VIMCRM12	Cutting Rail Metric 30 cm	VIMCR6	Cutting Rail Standard 6 inch
VIMCRM18	Cutting Rail Metric 46 cm	VIMCR12	Cutting Rail Standard 12 inch
VIMCRM24	Cutting Rail Metric 61 cm	VIMCR15	Cutting Rail Standard 15 inch
VIMCRM36	Cutting Rail Metric 92 cm	VIMCR18	Cutting Rail Standard 18 inch
		VIMCR24	Cutting Rail Standard 24 inch
		VIMCR30	Cutting Rail Standard 30 inch
		VIMCR36	Cutting Rail Standard 36 inch

Double-Colored and Translucent CUTTING MATS



Double-Colored and Translucent Cutting Mats

The Artool™ Cutting Mats are the most flexible cutting mats on the market today because they're made of a new, 3-ply high-tech polymer material. Constructed with a self-healing surface, Artool™ Cutting Mats are extremely durable and hold up under repeated use with art and mat knives or rotary cutters. If an Artool™ Cutting Mat should become bent or distorted, simply heat it in sunlight or hot water until it becomes pliable and then lay the mat flat.

VIMFFCMA1FT	Translucent 60 x 90 cm	VIMFFCMA10G	Green/Black 60 x 90 cm
VIMFFCMA2FT	Translucent 45 x 60 cm	VIMFFCMA20G	Green/Black 45 x 60 cm
VIMFFCMA3FT	Translucent 30 x 45 cm	VIMFFCMA30G	Green/Black 30 x 45 cm
VIMFFCMA4FT	Translucent 22 x 30 cm	VIMFFCMA40G	Green/Black 22 x 30 cm

HOT MATZ™

GET 2 COLORS IN 1 HOT MAT!

Hot Matz

Put some color in your life with our exciting new collection of Artool™ Hot Matz™. Spice up the look of your art/design studio or work area with your choice of six hot colors - Purple/Pink, Blue/Green or Red/Orange. These quality self-healing mats come in two handy sizes: 8.5" x 12" and 12" x 18".



VIMFFCMA4PP	Purple/Pink	22 x 30 cm
VIMFFCMA3PP	Purple/Pink	30 x 45 cm
VIMFFCMA4BG	Black/Green	22 x 30 cm
VIMFFCMA3BG	Black/Green	30 x 45 cm
VIMFFCMA4RO	Red/Orange	22 x 30 cm
VIMFFCMA3RO	Red/Orange	30 x 45 cm

Artmask™

Adhesive-Backed Masking Film



Medium-tack adhesion to porous surfaces.
 Very easy to cut and lift.
 Easy to apply, even on larger flat surfaces.
 Won't wrinkle, bleed or flutter under airbrush spray.
 Won't lift up paint when removed and/or repositioned.
 Solvent proof.
 Can be used with water and solvent based paints.

VIMF201 Artool Art Mask 18" x 10 yds
 VIMF202 Artool Art Mask 18" x 25 yds

STRETCHmask™

Adhesive-Backed Masking Film



Medium-tack adhesion to non-porous surfaces.
 Won't wrinkle, bleed or flutter under airbrush spray.
 Won't lift up paint when removed and/or repositioned.
 Solvent proof.
 Can be used with water and solvent based paints.
 Excellent for fine artists, auto graphics painters,
 sign painters, hobbyists, modelers, sculptors
 and general airbrushers.

VIMF101 Artool Stretch Mask 18" x 10 yds
 VIMF102 Artool Stretch Mask 18" x 25 yds

Hobby Mask™

Adhesive-Backed Masking Film



Protecting clear parts
 Aircraft canopies: mask the glass, paint the frame
 Scale autos and trucks: cover windows and lights
 RC cars: mask the windows and paint it up

Doing camouflage
 Aircraft: splinter and modern geometric designs
 Armor: WWII and modern
 Ships: hull patterns

Doing panel accents
 Aircraft: weathering new and old panels
 Armor: replacement patterns
 Sci-Fi vehicles: federation and Aztec patterns
 Railroad: weathering accents, new and old panels

Doing striping
 Cars and trucks: racing and accent stripes
 Aircraft: airline markings, invasion stripes
 Ships: waterline, deck markings

VIMHM1 Artool Hobby Mask 6" x 10 yds
 VIMHM2 Artool Hobby Mask Mini Series

FRISKETFILM

FOR AIRBRUSHING, MASKING AND STENCILING



Available in matte and gloss finishes
 Low-tack self-adhesive film
 Won't wrinkle, bleed or flutter under airbrush spray
 Can be removed and/or repositioned easily

VIMF301 Matte film 10" x 4yd / 6 per carton
 VIMF302 Matte film 14" x 4yd / 6 per carton
 VIMF303 Matte film 24" x 4yd / 4 per carton
 VIMF304 Matte film 24" x 10yd / 4 per carton
 VIMF310 Matte film 15" x 10" sheet 10/8 sheet packs
 VIMF311 Matte film 24" x 20" sheet 5/10 sheet packs
 VIMF401 Gloss film 10" x 4 yd/6 per carton
 VIMF402 Gloss film 14" x 4 yd/6 per carton
 VIMF403 Gloss film 24" x 4 yd/4 per carton
 VIMF404 Gloss film 24" x 10 yd/6 per carton
 VIMF405 Gloss film 15" x 10 sheet 10/8 sheet packs
 VIMF406 Gloss film 24" x 20 sheet 5/10 sheet packs



ULTRA MASK™

Professional Masking Film For Airbrushing Graphics On Anything!

VIMF501 Ultramask 24" x 5 yds
 VIMF502 Ultramask 24" x 10 yds
 VIMF503 Ultramask 9 x 6.5
 VIMF504 Ultramask Sheets 9 x 11

Tinted film for easy reference and workability
 Low tack WITH secure adhesive - STRENGTH (SAFE FOR artwork)
 SOLVENT PROOF! Maximum stretch for irregularly shaped surfaces

Airbrush Kits

Only from Iwata, these Airbrush Kits will have you learning on the best equipment in the industry. Each kit includes an assortment of materials that will have you airbrushing fast and producing impressive results.



ECLIPSE STARTER KITS

AKES001 STARTER KIT BS

- 13407210 HP BS Eclipse Airbrush
- 13409060 HPA QJ Airbrush quick joint
- VIMBT010 Nylon Covered Braided Hose
- VIM650004 Airbrush Cleaner 4 oz/112 ml
- VIM10231 Cobalt Blue Opaque 28 ml

AKES002 STARTER KIT CS

- 13402010 HP CS Eclipse Airbrush
- 13409060 HPA QJ Airbrush Quick Joint
- VIMBT010 NYLON Covered Braided Hose
- VIM650004 Airbrush Cleaner 4 oz/112 ml
- VIM10231 Cobalt Blue Opaque 28 ml

HIGH PERFORMANCE PLUS KITS

AKHPP001 STARTER KIT HP-C+

- 13407550 HP C+ Airbrush
- 13409060 HPA QJ Airbrush Quick Joint
- VIMBT010 Nylon Covered Braided Hose
- VIM650004 Airbrush cleaner 4 oz/112 ml
- VIM10231 Cobalt Blue Opaque 28 ml

AKHPP002 PAINT STARTER KIT HP-C+

- 13407550 HP C+ Airbrush
- 13409060 HPA QJ Airbrush Quick Joint
- VIMBT010 Nylon Covered Braided Hose
- VIM81001 Kit a Opaque Primary

AKHPP003 MINI KIT HP-C+

- 13407550 HP C+ Airbrush
- VIMBT010 Nylon Covered Braided Hose

ECLIPSE BASIC KITS

AKEB001 BASIC KIT BS

- 13407210 HP BS Eclipse Airbrush
- VIMBT010 Nylon Covered Braided Hose
- VIM650004 Airbrush Cleaner 4 oz/112 ml

AKEB002 BASIC KIT CS

- 13402010 HP CS Eclipse Airbrush
- VIMBT010 Nylon Covered Braided Hose
- VIM650004 Airbrush Cleaner 4 oz/112 ml

AKEB003 BASIC KIT BCS

- 13402000 HP BCS Eclipse Airbrush
- VIMBT010 Nylon Covered Braided Hose
- VIM650004 Airbrush Cleaner 4 oz/112 ml
- VIM10231 Cobalt Blue Opaque 28 ml

AKEB004 BASIC KIT SBS AUTOGRAPHICS

- 13402020 HP SBS Eclipse Airbrush
- 13409460 Side Bottle 15 ml
- VIM49020S Side Feed Cap Set for 20 mm Bottle Opening
- VIM4701P Translucent Plastic Cylinder 28 ml

MODEL KITS

CRIS50BLKDE MODEL AIRBRUSH STARTER KIT

- 15956440 IS 50 Silver Jet Compressor (black version)
- 13409030 HPA CH 41 Coil Type Air Hose (1/8 - 1/8)
- 13407100 HP-CR Revolution Airbrush





ECLIPSE DOUBLE KITS

- | | |
|----------------|-------------------------------------|
| AKED001 | DOUBLE KIT ECL+REV (CS/BCR) |
| 13402010 | HP CS Eclipse Airbrush |
| 13407110 | HP BCR Revolution Airbrush |
| 13409060 | HPA QJ Airbrush Quick Joint |
| VIMBT010 | Nylon Covered Braided Hose |
| AKED002 | DOUBLE KIT ECL+REV (BS/BCR) |
| 13407210 | HP BS Eclipse Airbrush |
| 13407110 | HP BCR Revolution Airbrush |
| 13409060 | HPA QJ Airbrush Quick Joint |
| VIMBT010 | Nylon Covered Braided Hose |
| AKED003 | DOUBLE KIT ECL+REV (SBS/BCR) |
| 13402020 | HP SBS Eclipse Airbrush |
| 13407110 | HP BCR Revolution Airbrush |
| 13409060 | HPA QJ Airbrush Quick Joint |
| VIMBT010 | Nylon Covered Braided Hose |

ECLIPSE PRO KITS

- | | | | |
|----------------|--|----------------|--|
| AKEP001 | ECCLIPSE PRO KIT BS | AKEP002 | ECCLIPSE PRO KIT CS |
| 13407210 | HP BS Eclipse Airbrush | 13402010 | HP CS Eclipse Airbrush |
| 13409060 | HPA QJ Airbrush Quick Joint | 13409060 | HPA QJ Airbrush Quick Joint |
| VIMBT010 | Nylon Covered Braided Hose | VIMBT010 | Nylon Covered Braided Hose |
| VIM650008 | Airbrush Cleaner 8 oz/224 ml | VIM650008 | Airbrush Cleaner 8 oz/224 ml |
| VIM81001 | Kit A Opaque Primary | VIM81001 | Kit A Opaque Primary |
| 13409070 | Coil Airbrush Hanger | 13409070 | Coil Airbrush Hanger |
| VIMFHV1DVD | Eddie Young Freehand Airbrush Dvd | VIMFHV1DVD | Eddie Young Freehand Airbrush Dvd |
| VIMFH1SP | Freehand Airbrush Template - Eddie Young | VIMFH1SP | Freehand Airbrush Template - Eddie Young |
| 13409890 | Airbrush Cleaning Pot | 13409890 | Airbrush Cleaning Pot |

Books & Videos

Videos - DVD

- | | |
|-------------|--|
| VIMVT010DVD | Basic Auto Airbrushing - Pamela Shanteau |
| VIMVT020DVD | Basic Tail Gate Airbrushing - Pamela Shanteau |
| VIMVT030DVD | Basic Gas Tank Airbrushing- Pamela Shanteau |
| VIMMFXDVD1 | Makeup FX DVD |
| VIMNAV101 | NAIL ART - Getting Started DVD |
| VIMVT800DVD | Airbrush Glass Painting - Rafael Schnepf DVD |
| VIMVT1500 | Airbrush from Scratch - Rafael Schnepf DVD |
| VIMVT1000 | Airbrush Concepts - Craig Fraiser DVD |
| VIMVT1100 | Radical Helmets Graphix - Craig Fraiser DVD |
| VIMFHTFDVD | Mike Lavallo's TRUE FIRE DVD only |
| VIMFHV1DVD | Freehand Airbrush Template DVD - Eddie Young |
| VIMFHV2DVD | Freehand Templates Instructional DVD by Bob Soroka |
| VIMVT500 | More Auto Cheap Tricks & FX W/ Craig Fraser |
| VIMVT600 | Auto Cheap Tricks & FX W/ Craig Fraser |

Books

- | | |
|----------|---|
| VIMVT040 | Ultimate Airbrush Handbook by Pamela Shanteau |
| VIMVT050 | New Custom Automotive & Motorcycle Graphics 101 book |
| VIMVT060 | Automotive Cheap Tricks & Special F/X II by Craig Fraser book |

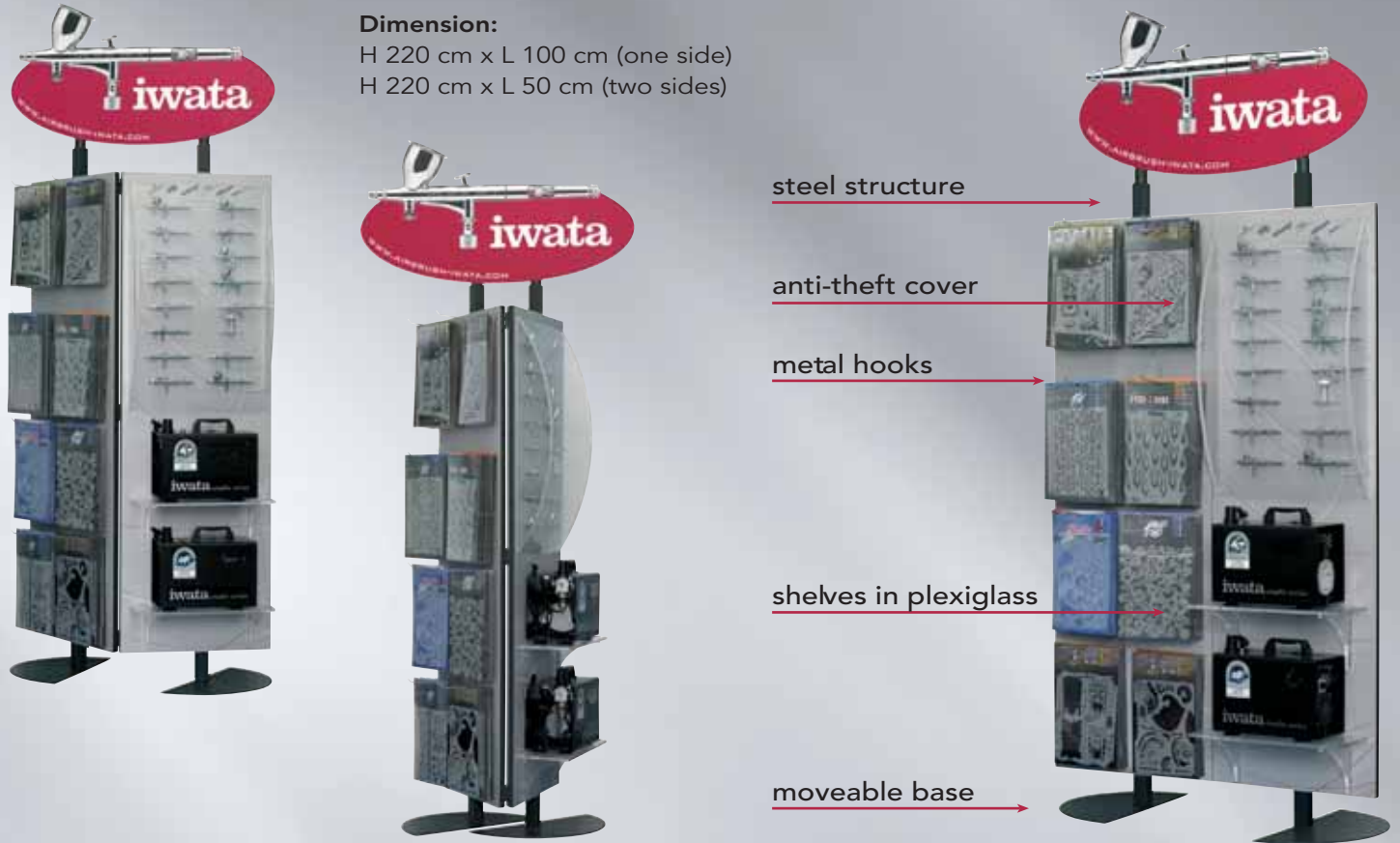


Iwata airbrush series Display

Airbrush stand

Floor stand consisting of two panels on a metal structure.

Suitable for any area. It is possible to create practical and flexible display angles.

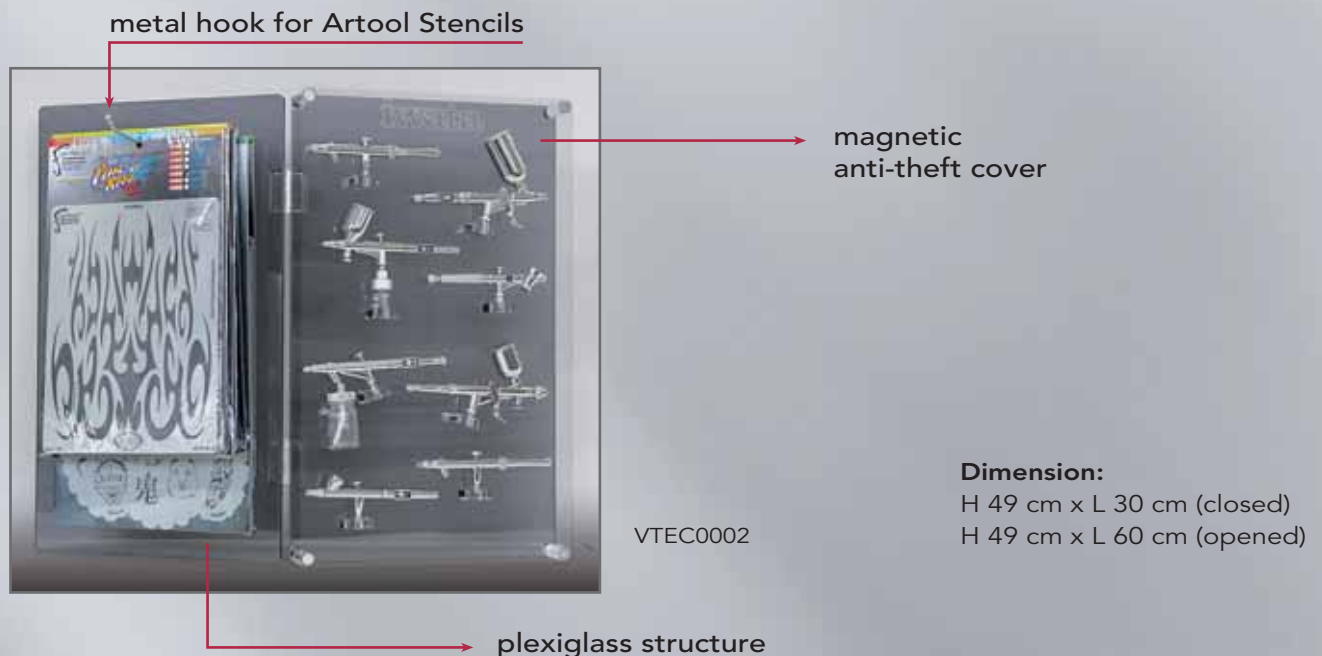


VTEC0001

Table Top Airbrush Display

Display consisting of two panels on a plexiglass structure.

Suitable for small areas. It is possible to create practical and flexible display angles.



VTEC0002

Airbrushes and Users

Match the airbrush (on the left) to the type of user (on the top)

AIRBRUSH	Illustrator	Murals	Ceramics	Fine Art	Student	T-shirt - Textile	Photo - Retoucher	Body-Art	Nail-Art	Cosmetics	Tanning	RC Cars	Trains	Planes	Model Builders	Dioramas	Figurines Miniatures	Hobby	Craft	Taxidermist	Wood Carving	Sign Painter	Auto - Graphics	Clear Varnish
Kustom TR			E	G	E			G		F	F	E	E	G	E			E	E	E	G	G	E	
Kustom CM	E			E			E			G			G		E	G	E			E	E	G	E	
Kustom CH	E			E			G	E	G	G		G	E		G	G	E					E	G	E
Kustom CS	G		E	E	E	G		E		E		E	E	F	G	G	G	E	E	E	E	E	E	E
Custom Micron CM-C Plus	E			E			E			G			G		E	G	E			E	E	G	E	
Custom Micron CM-B	E			E			E								G	G	E			G	E		G	
Custom Micron CM-SB	E			E		F	E								G	G	E			G	E		G	
Custom Micron CM-C	E			E			E			G			E		E	G	E			E	E		G	
Hi-Line HP-AH	F			F			F		E		E						E					E		
Hi-Line HP-BH	E			E			E	G	E	G	E	F			G		E					E		G
Hi-Line HP-CH	E			E			G	E	G	G	E	G	E		G	G	E					E	G	E
Hi-Line HP-TH	G	E	E	E		G					E	G		E	E	E		E	E	E	E	E	E	G
High Performance Plus HP-A Plus	F			F	G		F		E								G							
High Performance Plus HP-B Plus	E			G	E		E		E	F		F	G			G	E			G	E		G	
High Performance Plus HP-C Plus	E			E	E	F	E			E						G	E			G	E		G	
High Performance Plus HP-BC Plus	E		G	E	E	F	G		G	G		G	E		G	G	E	G	E	E	E	E	G	E
High Performance Plus HP-SB Plus	G	F	G	E	G	E		G	G			G	G		G			E	E	E	E	E	G	E
Eclipse HP-G6	E	F	E	E				E			E	E	G	E	E	E		E	E	E	E	E	E	G
Eclipse HP-BCS		E	E	E	E	E		E		G	E	E	G	E	G	G		E	E	E	E	E	E	
Eclipse HP-SBS	G		G	G	E	G		E		G		E	F		G			E	E	E	E		E	
Eclipse HP-CS	G		E	E	E	G		E		E		E	E	F	G	G	G	E	E	E	E	E	E	
Eclipse HP-BS	G		G	G	E			E	G	G		G	G		G	G	G	E	E	F	F	G	E	
Revolution HP-AR	F			F	G		F		E															
Revolution HP-BR	G		G	G	E			E	G	G		G	G		G	G	G	E	E	F	F	G	E	
Revolution HP-BCR		E	G	E	E	E		E		G	E	E	G	E	E	E		E	E	E	E	G	G	G
Revolution HP-CR			G	E	E	G		E	E	E		E	E	F	E	G	E	E	E	E	E	G	G	G
Revolution HP-SAR			E	G	E			G		F	E	E	E	G	E			E	E	E	E	G	F	
Revolution HP-TR1			G	E	E			E		E		E	E	F	E			E	E	E	E	G	G	G
Revolution HP-TR2			E	G	E			G		F	E	E	E	G	E			E	E	E	E	G	G	E

E = Excellent Matchup **F** = Fair Matchup **G** = Good Matchup **Blank** = Not Recommended

ANEST IWATA Europe

Corso Vigevano 46
10155 Torino - Italy
Tel. +39 011 22 74 402
Fax +39 011 22 74 000
info@anest-iwataeu.com
www.anest-iwataeu.com

ANEST IWATA Italia

Corso Vigevano 46
10155 Torino - Italy
Tel. +39 011 24 80 868
Fax +39 011 85 19 44
info@anest-iwata.it
www.anest-iwata.it

ANEST IWATA France

25 rue de Madrid, 38070
Saint Quentin Fallavier - France
Tél. +33 (0)4 74 94 59 69
Fax +33 (0)4 74 94 34 39
info@anest-iwata.fr
www.anest-iwata.fr

ANEST IWATA U.K.

Unit 10, Little End Road
Eaton Socon - St. Neots
Cambridgeshire - PE19 8JH
Tel. +44 (0)1480 40 54 19
Fax +44 (0)1480 21 76 10
enquiries@anest-iwata.co.uk
www.anest-iwata.co.uk

ANEST IWATA Scandinavia

Ögärdesvägen 6C
433 30 PARTILLE - Sweden
Tel. +46 31 340 28 60
Fax +46 31 340 28 69
info@anest-iwata.se
www.anest-iwata.se

ANEST IWATA Deutschland

Mommsenstrasse 5
04329 Leipzig
Tel. +49 341 241 443 0
Fax +49 341 252 559 5
info@anest-iwata.de
www.anest-iwata.de

ANEST IWATA Iberica

C/Les Teixidores 3-5
08918 - Badalona - Barcelona
Tel. +34 933 205 993
Fax +34 933 205 965
info@anest-iwata.es
www.anest-iwata.es

www.airbrush-iwata.com
info@airbrush-iwata.com

distributed by